

#4139

New 3 Bedrrom Villa - Panoramic Sea Views - Chloraka

 Chloraka, Paphos

€930,000 +VAT





Overview

Specifications

Bedrooms

 3


Bathrooms

 3

Covered

 152.7 m²

Type	Detached Villa
Toilets	3
Plot	223 m²
Status	Key ready
Year of construction	2021

Title deed	Land
Furnished	Optional furnished
Structure	Concrete
Facade	Brick
Energy efficiency rating	 A

Description

For Sale New Villa with Panoramic Sea Views in Chloraka Hills No. 5

A new development in the Chloraka area of Paphos. With amazing sea views, this project consists of 7 villas with 3,4 and 5 bedrooms. This project is close to the sea, restaurants, shopping, hospital, private school, bars and hotels.

Property is our passion. With every project delivered, we raise the bar in terms of quality and style. We continuously upgrade our building materials to ensure they are sustainable and to the highest specifications. Listening to the innovative ideas from our team of experts and taking inspiration from global property styles and trends, we develop projects with the latest technology, cutting edge designs and high-end features.

Choosing a new home is a smooth and stress-free process when you choose a reliable and well-established property developer, offering all specialist services under one roof.

All the Houses will be designed with underfloor Heating and Concealed Split

Units for cooling. The Concealed units will have high aesthetic impact on each room and the grilles will diffuse the cooled air throughout the space.

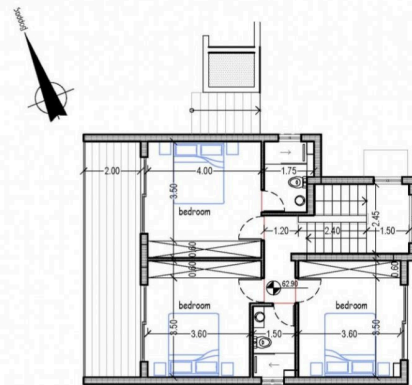
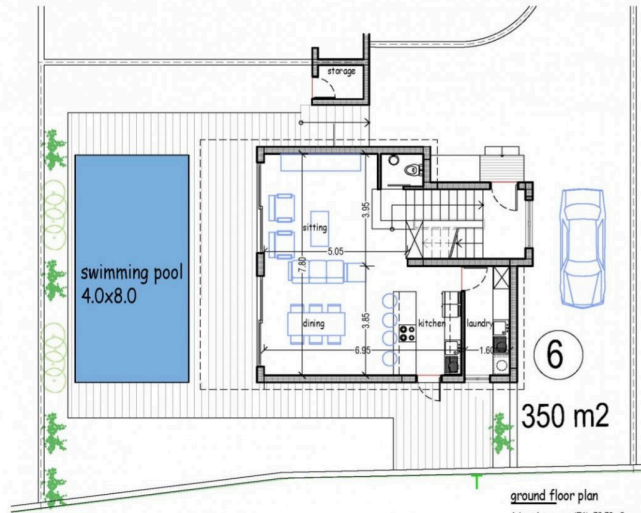
underfloor heating will be supported from VRF system. As an owner of the House you will benefit from a reliable system for your cooling and Heating requirements.



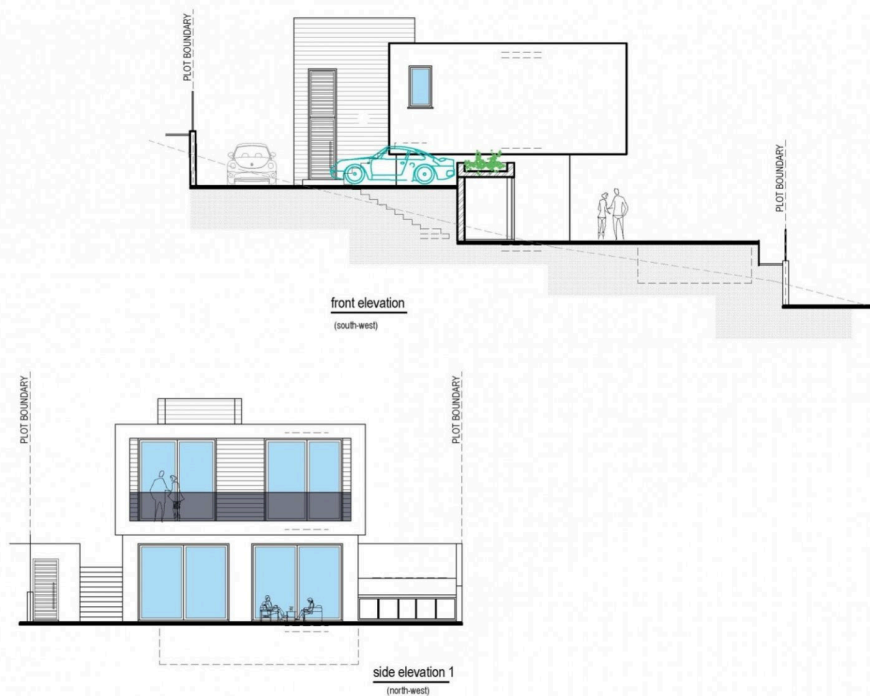
Floor plans

ALDO II villa 6(type B)

plot area 350m²
internal cov. area(E1+E2)=152.70m²
covered ver.=95.0m²
uncovered ver.=45.50m²
store=3.5m²
swimming pool=32.0m²



ALDO II villa 6(type B)



Additional information

Facilities

Aircondition, Split system

Heating, Underfloor

Features

Bar

Barbeque

Double glazing

Laminate flooring

Marble stairs

Distances

Amenities



700 m

Airport



22 km

Sea



600 m

Public transport



500 m

Schools



1 km

Resort



2 km

Contact us



Aristos Aristodemou

 info@uniquecyprushomes.com

