

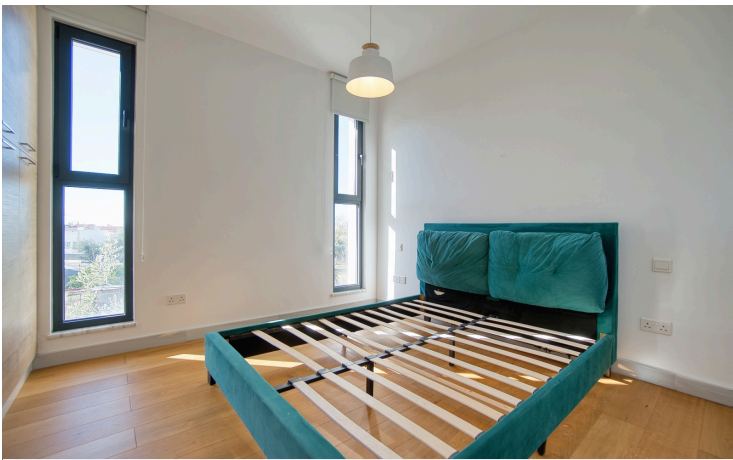
#4576

# Modern House for Long-Term Rent in Emba Paphos

 Emba - Petridia, Paphos

**€2,600** /Monat





# Überblick

## Spezifikationen

Schlafzimmer

 3


Badezimmer

 2

Bedeckt

 168 m<sup>2</sup>

Typ	<b>Freistehende Villa</b>
Duschen	<b>2</b>
Toiletten	<b>3</b>
Grundstück	<b>322 m<sup>2</sup></b>
Überdachte Veranda	<b>20 m<sup>2</sup></b>
Status	<b>Gebraucht</b>
Baujahr	<b>2020</b>

Möbliert	<b>Voll möbliert</b>
Struktur	<b>Beton</b>
Fassade	<b>Ziegel</b>
Gemeindekosten	<b>€500</b>
Communal charge frequency	<b>Monatlich</b>
Energieeffizienzklasse	 <b>A</b>

## Beschreibung

RENTED This modern detached villa is available for long term rent in the peaceful Emba - Petridia area. With 168 m<sup>2</sup> of internal space, the villa offers a spacious and comfortable living environment. Built in 2020, the property boasts an energy efficiency rating of A, helping keep utility costs low and ensuring a sustainable lifestyle.

The villa features two contemporary bathrooms and is fully furnished with stylish, high-quality furniture. Large windows fill the rooms with natural light and provide uninterrupted country views. The layout is well-designed for both family living and entertaining guests.

Situated in a secure gated complex, the home comes with its own private swimming pool, perfect for relaxing during warm days. The Emba - Petridia area is known for its tranquil surroundings, with easy access to local shops, schools, and amenities. Residents here enjoy a blend of rural charm and convenient living, with beautiful landscapes all around.

This exceptional property is proudly presented by Unique Cyprus Homes. If you are seeking comfort, privacy, and modern design in a sought-after location, this villa is an excellent choice. Contact us today to arrange a viewing.



# Additional information

## Ausstattung

Eingezäunter Komplex  
Parkplatz, Unbedeckt

Klimaanlage, Geteiltes System  
Pool, Privatgelände

Lager  
Solarwassererhitzer

## Eigenschaften

Ansicht des Landes  
Druckwassersystem  
En Suite Dusche  
Gäste-WC  
Internet  
Leichter Zugang zu den Hauptstraßen  
Marmortreppe  
Pool view  
Sackgasse  
Veranda

Bewässerungssystem  
Ecke  
Energieeffiziente Türen/Fenster  
Hell  
Kombinierte Küche und Essbereich  
Luxus-Spezifikationen  
Modernes Design  
Rollos  
Schalldämmung

Doppelverglasung  
Eingangstor, automatisiert  
Floor-to-ceiling windows  
Innentreppe  
Laminatboden  
Marmorboden  
Neben der Grünfläche  
Ruhebereich  
Treppenaufbewahrung

## Contact us



**Aristos Aristodemou**

 (+357) 99405421

 [info@uniquecyprushomes.com](mailto:info@uniquecyprushomes.com)

