

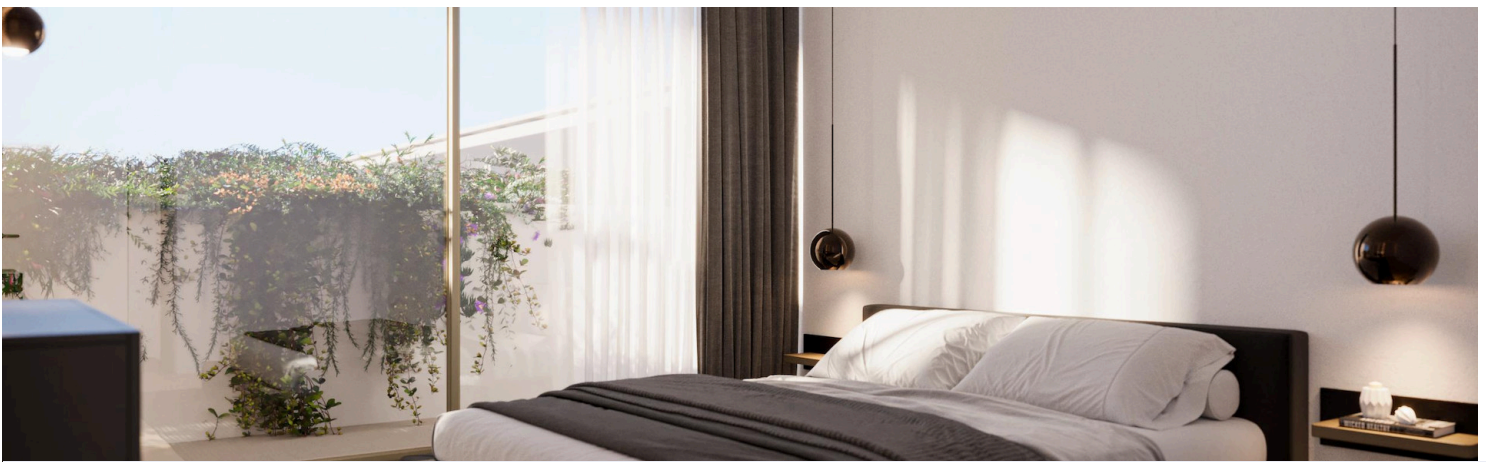
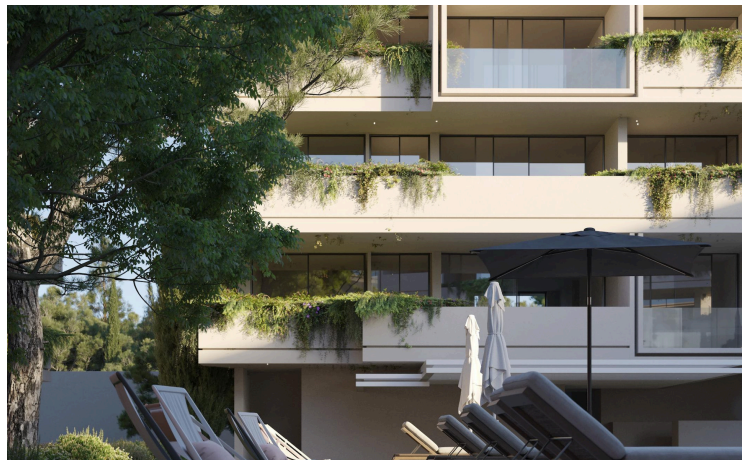
#4474

# Luxury Apartments for Sale in Tombs of the Kings, Paphos - Gated Resort Residences with Spa, Pool & Concierge

 Kato Paphos - Tomb of the Kings, Paphos

€663,000





# Überblick

## Spezifikationen

Schlafzimmer

 3


Badezimmer

 2

Bedeckt

 103.55 m<sup>2</sup>

Typ	<b>Wohnung</b>
Toiletten	<b>3</b>
Überdachte Veranda	<b>34.86 m<sup>2</sup></b>
Status	<b>Im Aufbau befindlich</b>
Baujahr	<b>2026</b>

Möbliert	<b>Optional möbliert</b>
Struktur	<b>Beton</b>
Fassade	<b>Ziegel</b>
Energieeffizienzklasse	 <b>A</b>

## Beschreibung

The Kings Residences – Luxury Living by the Tombs of the Kings, Paphos

The Kings Residences is a landmark upcoming premium real-estate project situated in the prestigious Tombs of the Kings Road district of Paphos — one of the most sought-after coastal property investment locations in the Mediterranean Region.

A Development Designed for Exclusivity & Elegance

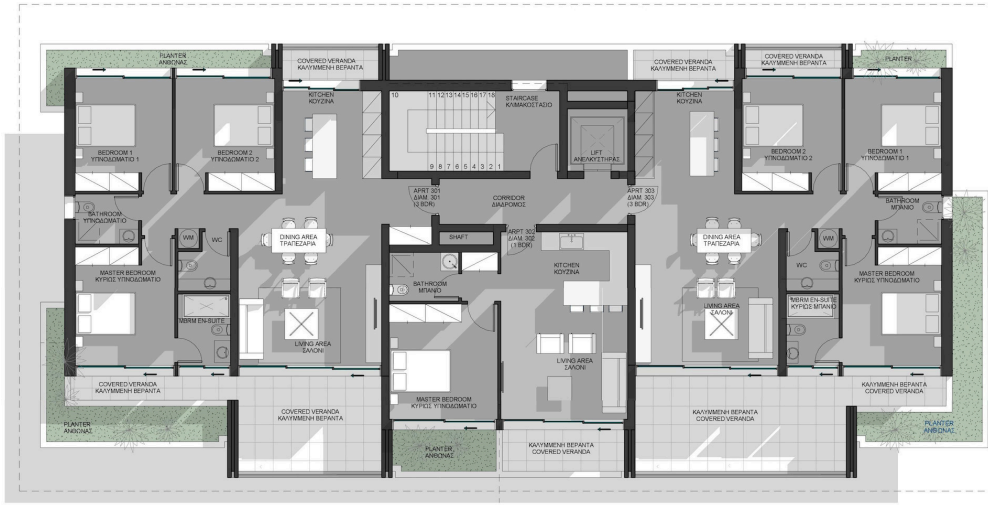
Spanning an impressive 9,100 m<sup>2</sup> prime land parcel, this gated and fully secure community will include five architecturally striking residential buildings, hosting a total of 72 luxurious one-, two-, and three-bedroom apartments crafted with exceptional attention to detail.

Each residence will be delivered with:

- ? High-end European finishes & craftsmanship
- ? Floor-to-ceiling glass façades for abundant natural light
- ? Large covered terraces with premium sea or urban skyline views
- ? Designer kitchens with concealed appliances & quartz worktops
- ? Luxury bathrooms featuring rain-showers, floating vanities & refined ceramics
- ? Smart home provisions — lighting, security & climate control



# Grundrisse



BLOCK B & D THIRD FLOOR

The King Residences														Apartment Buildings & Maisonettes		Page 14
Price €	Block	Level	Unit No.	Type	Bed	Total Built	Covered Internal	Covered Veranda	Planter	Storage	Covered Parking	Uncovered Parking	Swimming Pool	Bath	Guest W/C	
311,000	C	Ground	101	Pilot	1	69.6 m <sup>2</sup>	51.62 m <sup>2</sup>	17.98 m <sup>2</sup>		24x Private	1	1		1	/	
463,000			102	Apartment	2	93.1 m <sup>2</sup>	82 m <sup>2</sup>	11.1 m <sup>2</sup>		1	1			2	/	
463,000			103	Apartment	2	96.01 m <sup>2</sup>	84.79 m <sup>2</sup>	11.22 m <sup>2</sup>		1	1			2	/	
Reserved			104	Apartment	1	65.47 m <sup>2</sup>	52.17 m <sup>2</sup>	13.3 m <sup>2</sup>		1	1			1	/	
Sold			105	Apartment	1	86.44 m <sup>2</sup>	51.96 m <sup>2</sup>	34.48 m <sup>2</sup>		1	1			1	/	
Reserved			106	Apartment	1	65.29 m <sup>2</sup>	52.01 m <sup>2</sup>	13.28 m <sup>2</sup>		1	1	1		1	/	
463,000			107	Apartment	2	97.65 m <sup>2</sup>	85.27 m <sup>2</sup>	12.38 m <sup>2</sup>		1	1	1		2	/	
463,000			108	Apartment	2	98.52 m <sup>2</sup>	81.99 m <sup>2</sup>	16.53 m <sup>2</sup>		1	1	1		2	/	
311,000			109	Apartment	1	68.85 m <sup>2</sup>	52.51 m <sup>2</sup>	16.34 m <sup>2</sup>		/	1	1		1	/	
Sold			201	Apartment	1	65.85 m <sup>2</sup>	52.25 m <sup>2</sup>	13.6 m <sup>2</sup>		1	1	1		1	/	
475,000		202	Apartment	2	93.97 m <sup>2</sup>	81.62 m <sup>2</sup>	12.35 m <sup>2</sup>		1	1	1		2	/		
475,000		203	Apartment	2	97.62 m <sup>2</sup>	85.27 m <sup>2</sup>	12.35 m <sup>2</sup>		1	1	1		2	/		
485,000		204	Apartment	2	112.23 m <sup>2</sup>	80.14 m <sup>2</sup>	32.09 m <sup>2</sup>		1	1	1		2	/		
475,000		205	Apartment	2	103.83 m <sup>2</sup>	80.15 m <sup>2</sup>	23.68 m <sup>2</sup>		1	1	1		2	/		
Reserved		206	Apartment	2	96.55 m <sup>2</sup>	84.79 m <sup>2</sup>	11.76 m <sup>2</sup>		1	1	1		2	/		
Sold		207	Apartment	2	101.2 m <sup>2</sup>	82.06 m <sup>2</sup>	19.14 m <sup>2</sup>		1	1	1		2	/		
Sold		208	Apartment	1	70.18 m <sup>2</sup>	52.23 m <sup>2</sup>	17.95 m <sup>2</sup>		1	1	1		1	/		
358,000		301	Apartment	1	70.28 m <sup>2</sup>	52.31 m <sup>2</sup>	17.97 m <sup>2</sup>		1	1	1		Communal	1	/	
516,000		302	Apartment	2	93.82 m <sup>2</sup>	81.82 m <sup>2</sup>	12 m <sup>2</sup>		1	1	1		21.75x10 m	2	/	
516,000		303	Apartment	2	96.95 m <sup>2</sup>	84.97 m <sup>2</sup>	11.98 m <sup>2</sup>		1	1	1		21.75x10 m & Kids	2	/	
516,000		304	Apartment	2	104.23 m <sup>2</sup>	80.23 m <sup>2</sup>	24.01 m <sup>2</sup>		1	1	1		4x3.8 m	2	/	
516,000		305	Apartment	2	99.46 m <sup>2</sup>	79.76 m <sup>2</sup>	19.7 m <sup>2</sup>		1	1	1		2	/		
Sold		306	Apartment	2	104.8 m <sup>2</sup>	85.67 m <sup>2</sup>	19.13 m <sup>2</sup>		1	1	1		2	/		
Sold		307	Apartment	2	100.97 m <sup>2</sup>	81.83 m <sup>2</sup>	19.14 m <sup>2</sup>		1	1	1		2	/		
Reserved		308	Apartment	1	69.34 m <sup>2</sup>	51.39 m <sup>2</sup>	17.95 m <sup>2</sup>		1	1	1		1	/		
611,000		D	Ground	101	Pilot	3	133.71 m <sup>2</sup>	107.62 m <sup>2</sup>	26.09 m <sup>2</sup>		/	1			2	1
Reserved				102	Apartment	1	63.93 m <sup>2</sup>	51.42 m <sup>2</sup>	12.51 m <sup>2</sup>		/	1			1	/
611,000				103	Apartment	3	130.44 m <sup>2</sup>	103.5 m <sup>2</sup>	26.94 m <sup>2</sup>		/	1		1	2	1
638,000			Second	201	Apartment	3	135.03 m <sup>2</sup>	107 m <sup>2</sup>	28.03 m <sup>2</sup>		/	1			2	1
322,000				202	Apartment	1	57.8 m <sup>2</sup>	50.94 m <sup>2</sup>	6.86 m <sup>2</sup>		/	1			1	/
638,000	203			Apartment	3	134.27 m <sup>2</sup>	103.87 m <sup>2</sup>	30.4 m <sup>2</sup>		/	1			2	1	
Sold	301			Apartment	3	133.23 m <sup>2</sup>	107.54 m <sup>2</sup>	25.69 m <sup>2</sup>		/	1			2	1	
358,000	302			Apartment	1	58.2 m <sup>2</sup>	51.32 m <sup>2</sup>	6.88 m <sup>2</sup>		/	1			1	/	
663,000	303			Apartment	3	138.41 m <sup>2</sup>	103.55 m <sup>2</sup>	34.86 m <sup>2</sup>		/	1			2	1	
543,000	E		GF + FF	1	Maisonette	2	113.15 m <sup>2</sup>	94.27 m <sup>2</sup>	18.88 m <sup>2</sup>		/	1			2	1
543,000				2	Maisonette	2	109.8 m <sup>2</sup>	91.59 m <sup>2</sup>	18.21 m <sup>2</sup>		/	1		1	2	1
543,000				3	Maisonette	2	109.8 m <sup>2</sup>	91.59 m <sup>2</sup>	18.21 m <sup>2</sup>		/	1		1	2	1
543,000				4	Maisonette	2	113.08 m <sup>2</sup>	94.28 m <sup>2</sup>	18.8 m <sup>2</sup>		/	1		1	2	1

Optional | Fully Loaded Package: One Bedroom: €25,000 | Two Bedrooms: €30,000 | Three Bedrooms: €35,000  
 Optional | Underfloor Heating: One Bedroom: €10,000 | Two Bedrooms: €13,000 | Three Bedrooms: €16,000 | Only electrical underfloor heating | Important: Not Available anymore



# Additional information

## Eigenschaften

Gäste-WC

## Entfernungen

Ausstattung

 300 m

Flughafen

 20 km

Meer

 700 m

Öffentlicher Verkehr

 300 m

Schulen

 900 m

Resort

 800 m

## Contact us



**Aristos Aristodemou**

 [info@uniquecyprushomes.com](mailto:info@uniquecyprushomes.com)

